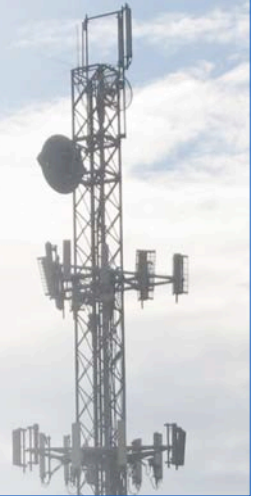




SuperRange4

Public Safety 4.9GHz Modular Radio



The SuperRange4 is the first hi-power 4.9GHz mini-PCI card with FCC Part90Y modular approval. It achieves mask compliance at 400mW output power through an innovative amplifier design and also exhibits sensitivity and selectivity far beyond common 802.11 radios that have been simply shifted to operate in the 4.9GHz band. The SuperRange4 is compatible with Atheros Linux MADWIFI and has been proven in extreme temperature conditions.

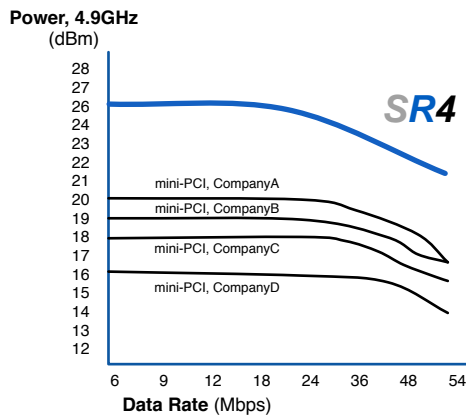
Hi-Performance PCB for Maximum RF Performance

MODULAR FCC PART90Y APPROVAL
Licensed for 4.9GHz Operation with up to 27dBi Gain Antenna

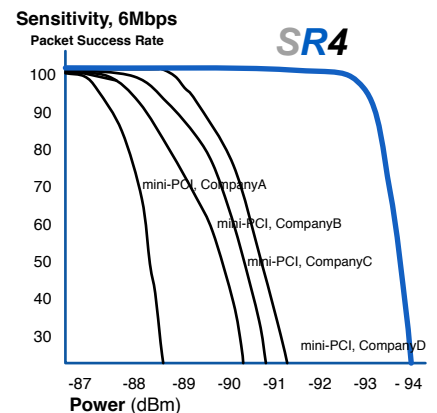


Built-in HeatSink for Temperature Performance

Built for Industrial / Rugged Applications



- | FEATURES |
|---------------------------|
| 400mW Output Power |
| FCC Part90Y Compliant |
| Industry-Best Sensitivity |
| Extended Temperature |
| Enhanced Filtering |
| 5/10/20/40 MHz Channels |
| MMCX Ant. Connector |



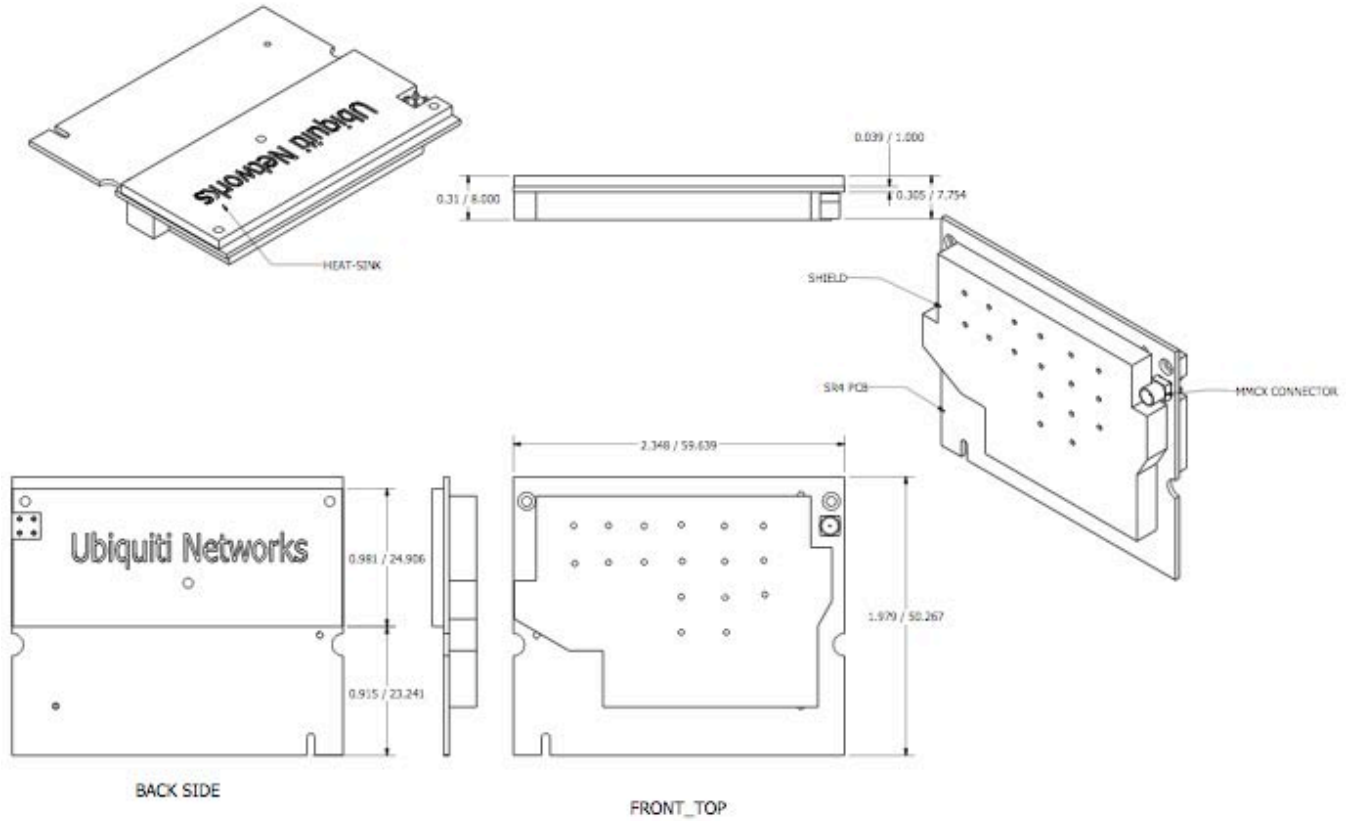
SuperRange4

TECHNICAL SPECIFICATIONS

CARD INFORMATION								
Radio Operation	Proprietary 4.9GHz based on OFDM 802.11a with QPSK/16QAM/64QAM							
Interface	32-bit Cardbus Type II							
Operation Voltage	3.3VDC							
Antenna Ports	Dual MMCX (Primary only required; secondary optional for diversity)							
Temperature Range	-40C to +80C (extended temp version up to +95C)							
Security	WPA, WPA2, AES-CCM & TKIP Encryption, 802.1x, 64/128/152bit WEP							
Data Rates	6Mbps, 9Mbps, 12Mbps, 24Mbps, 36Mbps, 48Mbps, 54Mbps							
RoHS Compliance	YES							
REGULATORY INFORMATION								
Wireless Modular Approvals	FCC PART90Y and Industry Canada. Approval covers antenna use up to 27dBi							
RADIO OPERATING FREQUENCY 4.94-4.99GHz								
TX SPECIFICATIONS				RX SPECIFICATIONS				
4.9GHz OFDM	DataRate	TX Power	Tolerance	4.9GHz OFDM	DataRate	Sensitivity	Tolerance	
	6Mbps	26 dBm	+/-1.5dB		6Mbps	-94 dBm	+/-1.5dB	
	9Mbps	26 dBm	+/-1.5dB		9Mbps	-93 dBm	+/-1.5dB	
	12Mbps	26 dBm	+/-1.5dB		12Mbps	-91 dBm	+/-1.5dB	
	18Mbps	26 dBm	+/-1.5dB		18Mbps	-90 dBm	+/-1.5dB	
	24Mbps	26 dBm	+/-1.5dB		24Mbps	-86 dBm	+/-1.5dB	
	36Mbps	24 dBm	+/-1.5dB		36Mbps	-83 dBm	+/-1.5dB	
	48Mbps	23 dBm	+/-1.5dB		48Mbps	-77 dBm	+/-1.5dB	
54Mbps	22 dBm	+/-1.5dB	54Mbps	-74 dBm	+/-1.5dB			
CURRENT CONSUMPTION INFORMATION								
TX CURRENT CONSUMPTION				RX CURRENT CONSUMPTION				
4.9GHz OFDM	DataRate	Current	Tolerance	4.9GHz OFDM	DataRate	Current	Tolerance	
	6Mbps	1.60 A	+/-100 mA		6Mbps	300 mA	+/-100 mA	
	9Mbps	1.60 A	+/-100 mA		9Mbps	300 mA	+/-100 mA	
	12Mbps	1.60 A	+/-100 mA		12Mbps	300 mA	+/-100 mA	
	18Mbps	1.60 A	+/-100 mA		18Mbps	300 mA	+/-100 mA	
	24Mbps	1.60 A	+/-100 mA		24Mbps	300 mA	+/-100 mA	
	36Mbps	1.30 A	+/-100 mA		36Mbps	300 mA	+/-100 mA	
	48Mbps	1.10 A	+/-100 mA		48Mbps	300 mA	+/-100 mA	
54Mbps	1.00 A	+/-100 mA	54Mbps	300 mA	+/-100 mA			
4.9GHz PUBLIC SAFETY FREQUENCY CHANNEL SUPPORT								
Frequency	5MHz	10MHz	20MHz	Frequency	5MHz	10MHz	20MHz	
4942.5 MHz				4967.5 MHz				
4945.0 MHz				4970.0 MHz				
4947.5 MHz				4972.5 MHz				
4950.0 MHz				4975.0 MHz				
4952.5 MHz				4980.0 MHz				
4957.5 MHz				4982.5 MHz				
4960.0 MHz				4985.0 MHz				
4962.5 MHz				4987.5 MHz				
4965.0 MHz								
RANGE PERFORMANCE								
Indoor (Antenna Dependent):							Up to 100meters	
Outdoor (Antenna Dependent):							Over 1km	
DRIVER INFORMATION								
Operating System Support	Linux MADWIFI, WindowsXP, Windows2000							
Advanced Mobility / QuickHandoff	WindowsXP/2000 Utility with Enhanced Mobility Driver from Ubiquiti							
Cisco Support	CCX 4.0 Supported Driver/Utility also available from Ubiquiti							
For help with MADWIFI or other Special Driver Support, Please e-mail support@ubnt.com								

SuperRange4

MECHANICAL DIMENSIONS



495-499 Montague Expwy.
Milpitas, CA 95035
T (408)-942-3085
F (408)-351-4973
<http://www.ubnt.com>