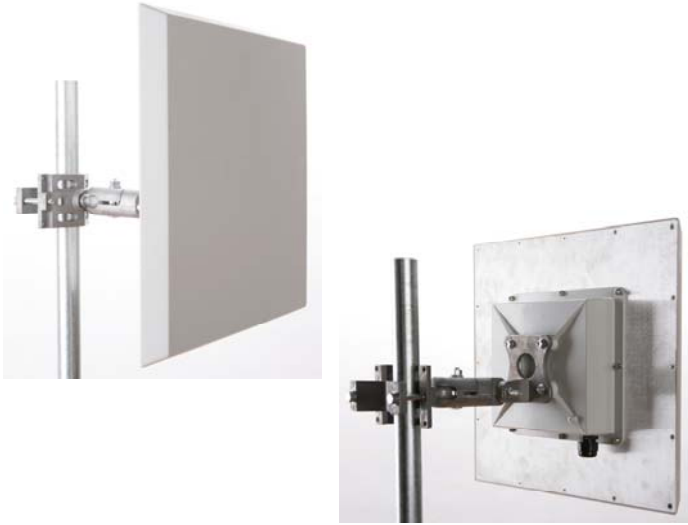


3.3-3.8GHz 20dBi Panel Antenna for ARC IES™, Integrated Enclosure Solution



- ◆ High gain, low cost circuit design
- ◆ Low profile and rugged design for outdoor use
- ◆ US Engineered
- ◆ Manufactured under strict US quality control procedures
- ◆ Fits with ARC's IES™, Integrated Enclosure Solution SOLD SEPARATELY— Part # ARC-IE1001K99 or ARC-IE2000K01 (Gen II); ARC ABS™, Articulating Bracket Solution included with ARC-IE2000K01.
- ◆ Custom Enclosures Available

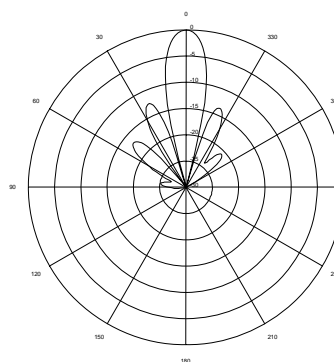
Mechanical and Environmental Specifications	
Length x Width x Depth	15.4in x 15.4in x 1.7in (39.1cm x 39.1cm x 4.3cm)
Weight	2.8lbs (1.3kg)
Backplane	Aluminum
Enclosure	Gray, Powder-coated die-cast aluminum
Radome	Gray, Injection Molded UV stabilized ABS plastic
Wind Survivability	125mph (201kph)
Wind Load	1.65ft ² (0.15m ²)
Operating Temperature Range	-49°F to +149°F (-45°C to +65°C)
Pole Mount Diameter Range	0.75in to 3.0in (1.9cm to 7.6cm)

Electrical Specifications	
Frequency Range	3.3-3.8GHz
Gain	20dBi
3dB Beamwidth Vertical/Horizontal	12deg/13deg
Polarization	Single linear, horizontal or vertical
VSWR	≤1.5:1 typ., ≤1.7:1 max.
Front-to-Back Ratio	>30 dB
Cross Polarization	>30 dB
ETSI	TS 2
Power Rating	30 watts
Impedance	50 ohms
Lightning Protection	DC ground
Connector Type	R/A SMA Jack

Ordering Information	
Part #	Description
ARC-IA3520B01	3.3-3.8GHZ 20dBi, R/A SMA Jack

Shipping Information	
Sizes and Weights	Description
19in X 16in X 16in (48.3cm x 40.6cm x 40.6cm) 31lb, (14.1kg)	Bulk pack includes 10 antennas in an over pack box

RF Patterns
Vertical Cut, typ.



RF Patterns
Horizontal Cut, typ.

