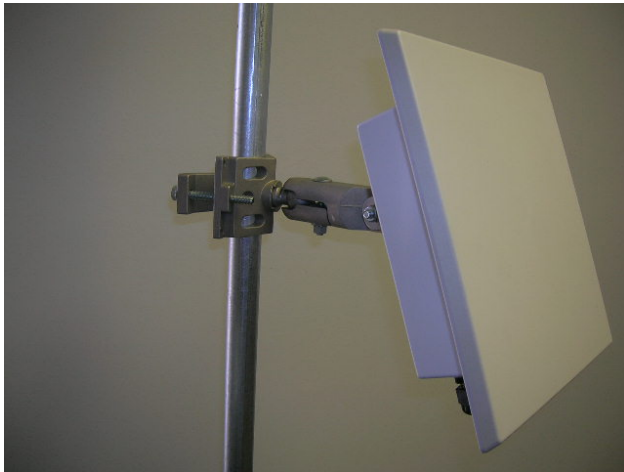


2.3-2.5GHz 16dBi Panel Antenna for ARC IES™, Integrated Enclosure Solution



- ◆ High gain, low cost circuit design
- ◆ Low profile and rugged design for outdoor use
- ◆ US Engineered
- ◆ Manufactured under strict US quality control procedures
- ◆ Fits with ARC's IES™, Integrated Enclosure Solution SOLD SEPARATELY— Part # ARC-IE1001K02 or ARC-IE2000K01; both include ARC ABS™, Articulating Bracket Solution
- ◆ Custom Enclosures Available

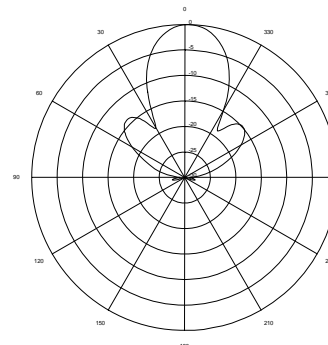
Mechanical and Environmental Specifications	
Length x Width x Depth	10.4in x 10.4in x .49in (264.6mm x 264.6mm x 12.45mm)
Weight	1.3lb (0.61kg)
Backplane	Aluminum
Radome	UV stabilized ABS plastic, gray
Wind Survivability	125mph (201kph)
Wind Load	0.75ft ² (0.069m ²)
Operating Temperature Range	-49°F to +149°F (-45°C to +65°C)
Pole Mount Diameter Range	0.75in to 3.0in (19mm to 76mm)

Electrical Specifications	
Frequency Range	2.3-2.5GHz
Gain	16.0 dBi typical
3dB Beamwidth Vertical/Horizontal	25deg/27deg
Polarization	Single linear, horizontal or vertical
VSWR	≤1.5:1 typical, 1.7:1 max
Front-to-Back Ratio	≤30 dB
Cross Polarization	≤20 dB
Power Rating	6 watts
Impedance	50 ohms
Lightning Protection	DC ground
Connector Type	R/A SMA Jack

Ordering Information	
Part #	Description
ARC-IA2416B02	2.3-2.5GHz 16dBi, R/A SMA Jack

Shipping Information	
Sizes and Weights	Description
12.75in x 10.5in x 10.5in (324mm x 267mm x 267mm) 15.5lb (7.0kg)	Bulk Pack, 10 antennas divided in an overpack box

RF Patterns
Vertical Cut, typ.



RF Patterns
Horizontal Cut, typ.

